

二零一四年二月二十日

家庭議會第 FC 6/2014 號文件

討論文件

## 家庭議會

### 學前兒童的康復服務

目的

由衛生署擬備有關「學前兒童的康復服務」的投影片簡報載於  
附件。

徵詢意見

2. 請委員提出意見。

家庭議會秘書處

二零一四年二月



# Introduction to Child Assessment Service Department of Health

2014



## Child Assessment Service

### Vision

Enable children with special needs to achieve their personal best and to lead fulfilled lives

Be an influential expert in paediatric rehabilitation

### Mission

We enable children to overcome developmental challenges through quality multidisciplinary assessment, interim support services and intervention prescriptions.

In partnership with families and communities, we create and coordinate programmes and services to foster independence and enrich the quality of life of children and families with special needs.

We promote, protect and ensure health, welfare and rights of children with special needs through participation in education, advocacy, research and policy making.

We build an innovative, cohesive and expert team by providing a rewarding career and opportunities for professional development in a knowledge leveraged environment.

### Values

- Client Focus
- Partnership
- Innovation
- Professional Excellence
- Commitment



## Child Assessment Service

Pamela Youde Child Assessment Centre (Kwun Tong) 1988

Pamela Youde Child Assessment Centre (Shatin) 1990

Tuen Mun Child Assessment Centre 1991

Ha Kwai Chung Child Assessment Centre 1997

Central Kowloon Child Assessment Centre 1999

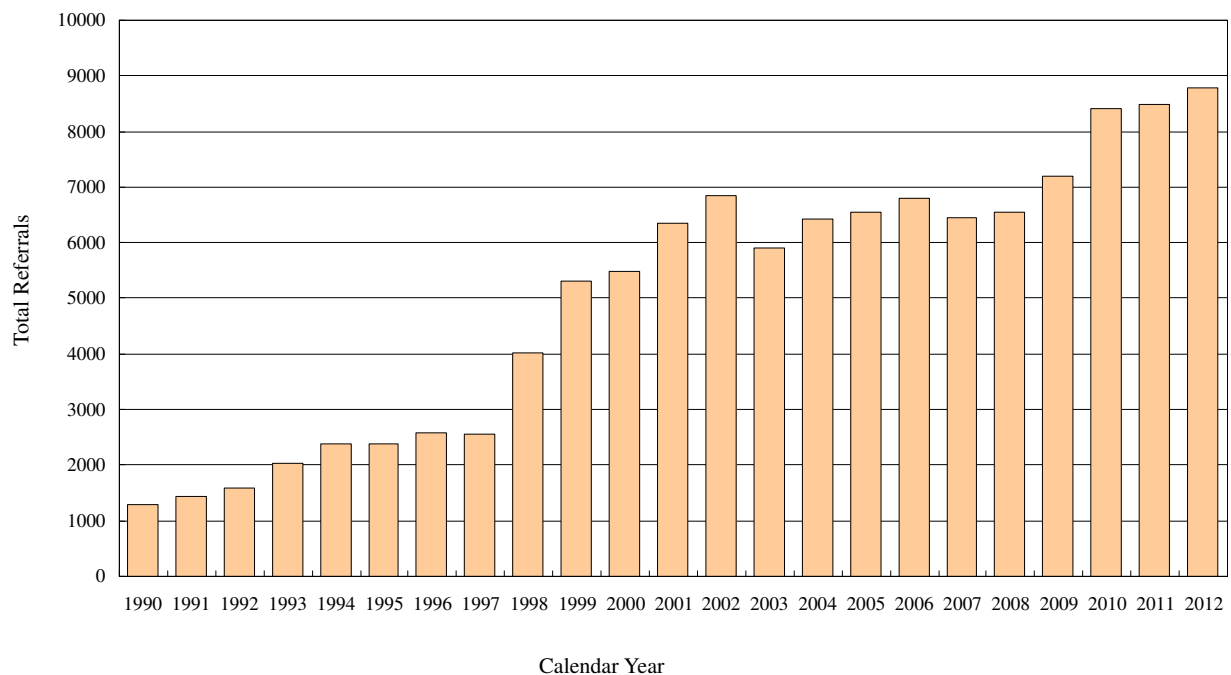
Fanling Child Assessment Centre 2003

## Population coverage by region

	Established in	Population (all ages)	1-14 years population (11.6%)	New Referrals (2012)
KTCAC	1989	1,058,779	122,818	1,832
STCAC	1990	1,050,456	121,853	1,546
TMCAC	1991	1,066,075	123,665	1,292
HCCAC	1997	1,337,986	155,206	1,617
CKCAC	1999	1,425,931	165,408	1,423
FLCAC	2003	600,987	69,714	1,104
CAS		6,540,214	758,665	8,814
Total HK		7,070,388	820,165	
Coverage			92.5%	

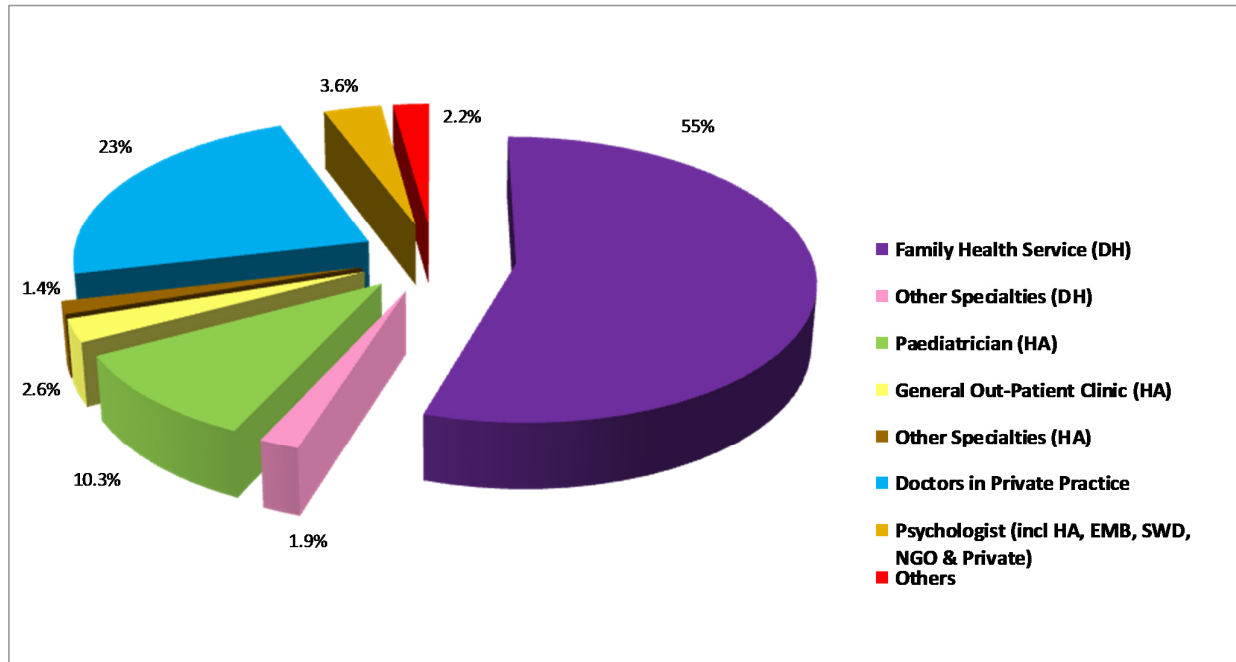


### Child Assessment Service Total Referrals from 1990 - 2012

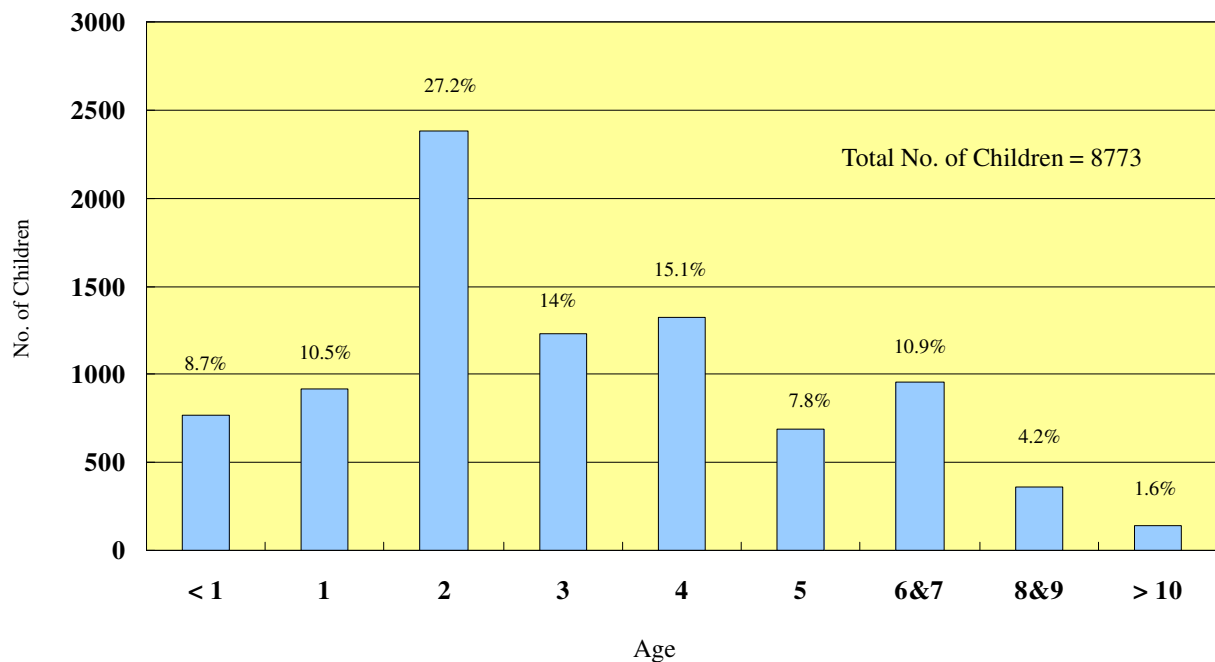




## Child Assessment Service Source of Referrals In 2012

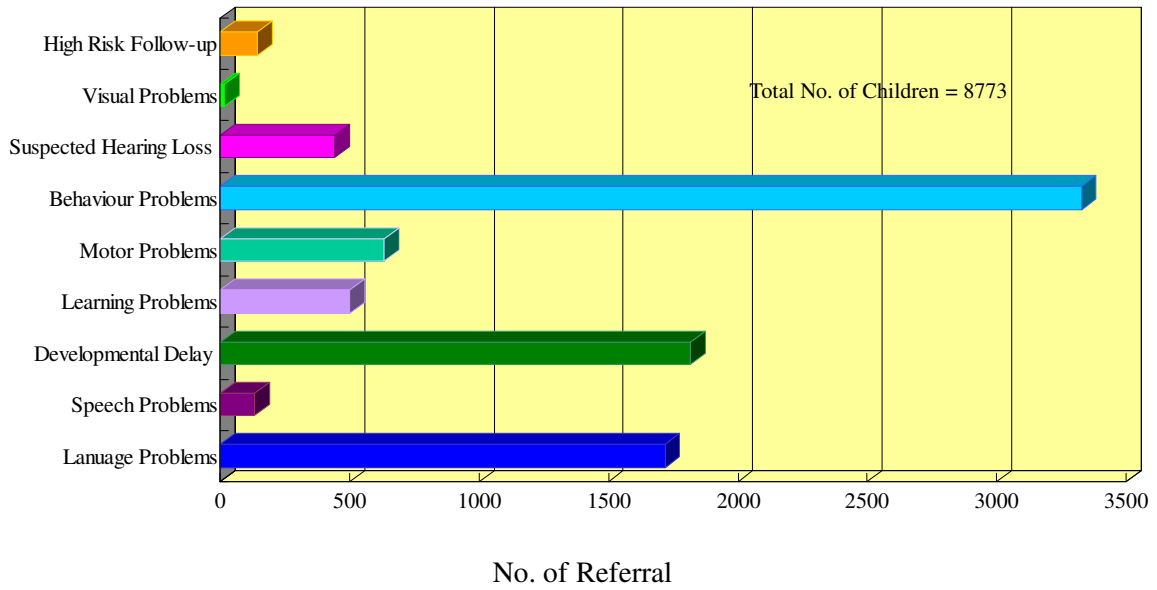


## Child Assessment Service Age of Children Referred in 2012

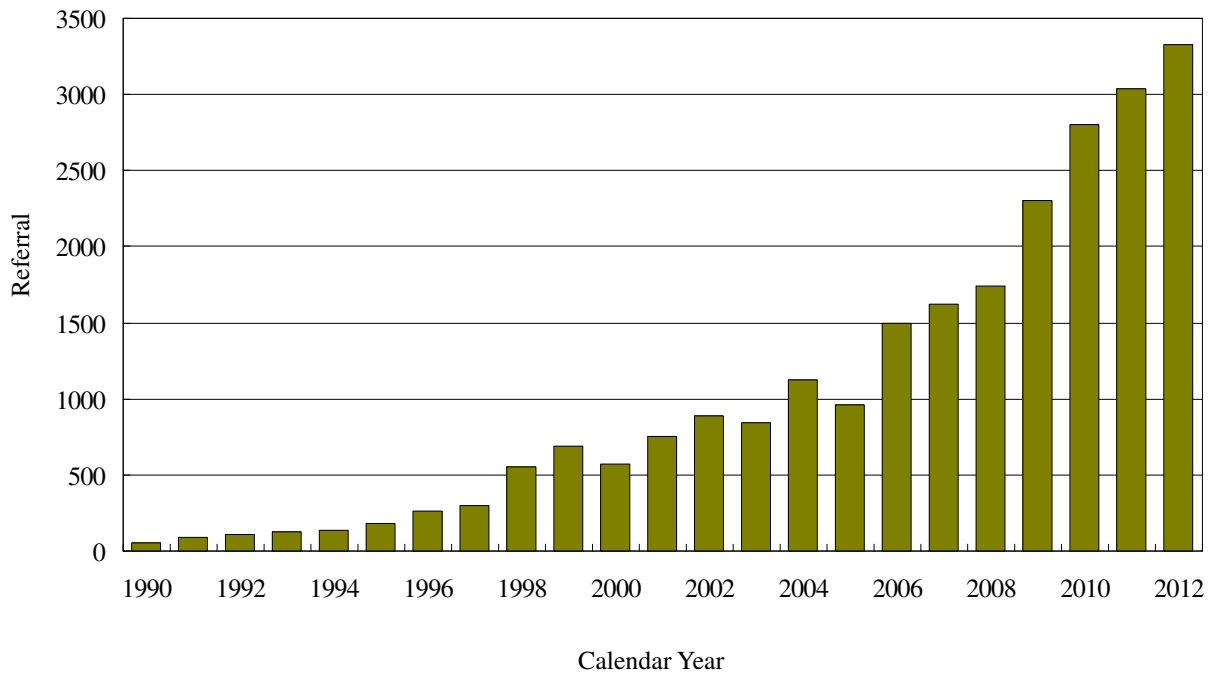




## Child Assessment Service Presenting Problems of Children Referral Reasons to CAS in 2012



## Child Assessment Service 1990 – 2012 Main Presenting Problem Behaviour Problems

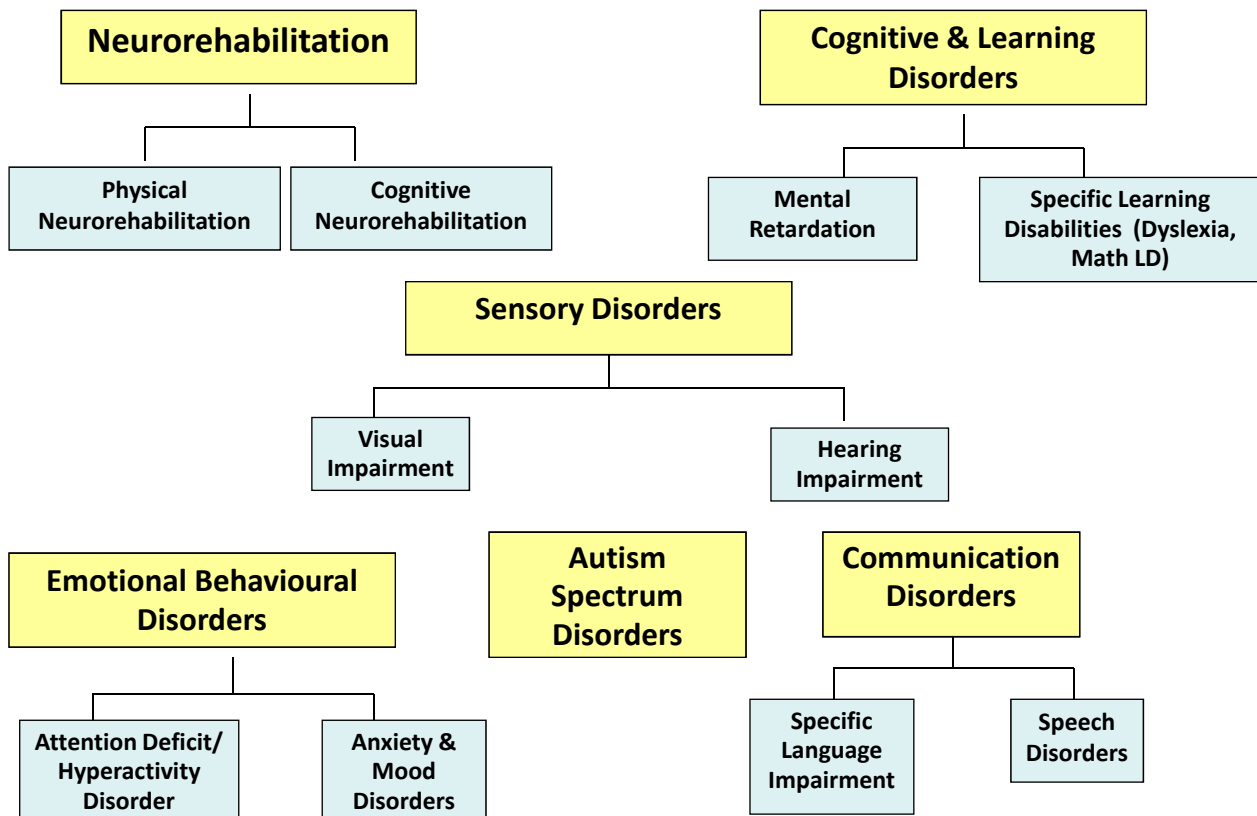




## Child Assessment Service Conditions Newly Diagnosed in 2012

<b>Diagnostic Categories</b>	<b>Cases</b>
Borderline Developmental Delay	1891
Significant Developmental Delay / Mental Retardation	1036
Language Delay / Disorders and Speech Problems	2764
Dyslexia & Mathematics Disorders	518
Attention Problem / Disorders	2182
Autistic Spectrum Disorder	1567
Developmental Coordination Problem / Disorders	743
Developmental Motor Delay (Pre-school)	1001
Cerebral Palsy	47
Visual Impairment (Blind or Low Vision)	41
Hearing Impairment (Moderate grade or worse)	97
Other Psychiatric / Psychological Difficulties	622

### CAS Subspecialty Teams (major groups only)



1. Epidemiology, Surveillance and Early Intervention
2. Development of Clinical Protocols
3. Comprehensive Developmental Assessment
4. Rehabilitation planning and psycho-education
5. Interim support
6. Fostering and maintenance of partnerships
7. Parent work
8. Public and Professional Education
9. Research and publications
10. Subspecialty Training for Developmental Behavioural Paediatricians

## Hong Kong / CAS experience

Example: Autism Spectrum Disorder



## Child Health Survey, Dept of Health, 2005-2006

- Self report by parents
- 0.1% of their children aged 2-14 years had autism as diagnosed by doctor

## Persons with Disabilities and Chronic Diseases, Census and Statistics Dept, 2008

- 0.3% of children aged below 15 years had autism as diagnosed by professionals (doctors or psychologists)
- Proxy reporting was allowed for persons aged under 12

## Central Registry for Rehabilitation, Labour and Welfare Bureau, September 2013

- Reported on voluntary basis
- 4272 cases (0-19 yrs) registered

## CAS experience

- Based on data from Child Assessment Service (CAS), Department of Health, in 2008 – 2012
- Six Child Assessment Centers in HK, ~93% of HK population
- Diagnostic Criteria of ASD based on DSM IV and ICD 10
  - F84.0 Childhood Autism
  - F84.1 Atypical Autism
  - F84.5 Asperger's Syndrome

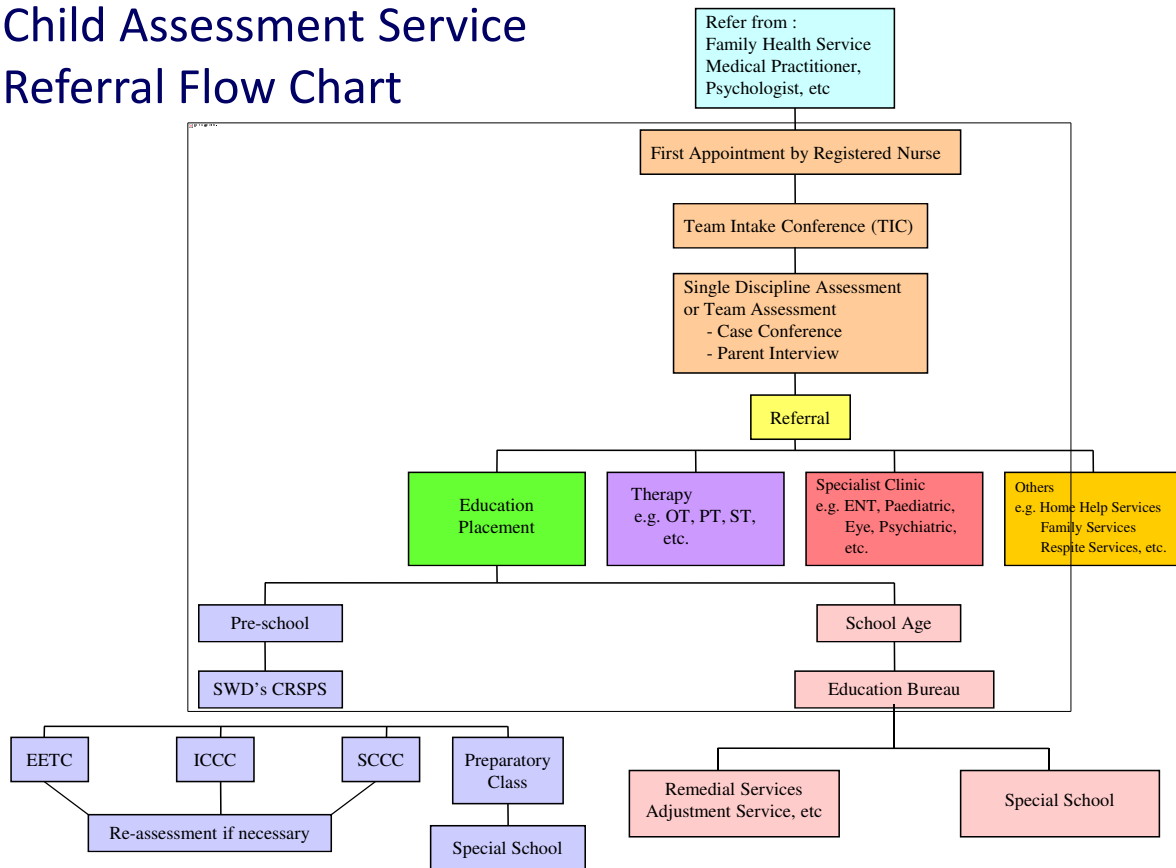
## Number of patients newly diagnosed 2008 - 2012

	2008	2009	2010	2011	2012
F84.0	359	495	515	599	526
F84.1	661	937	1156	955	991
F84.5	109	163	224	196	172
<b>Total</b>	<b>1129</b>	<b>1595</b>	<b>1895</b>	<b>1790</b>	<b>1689</b>

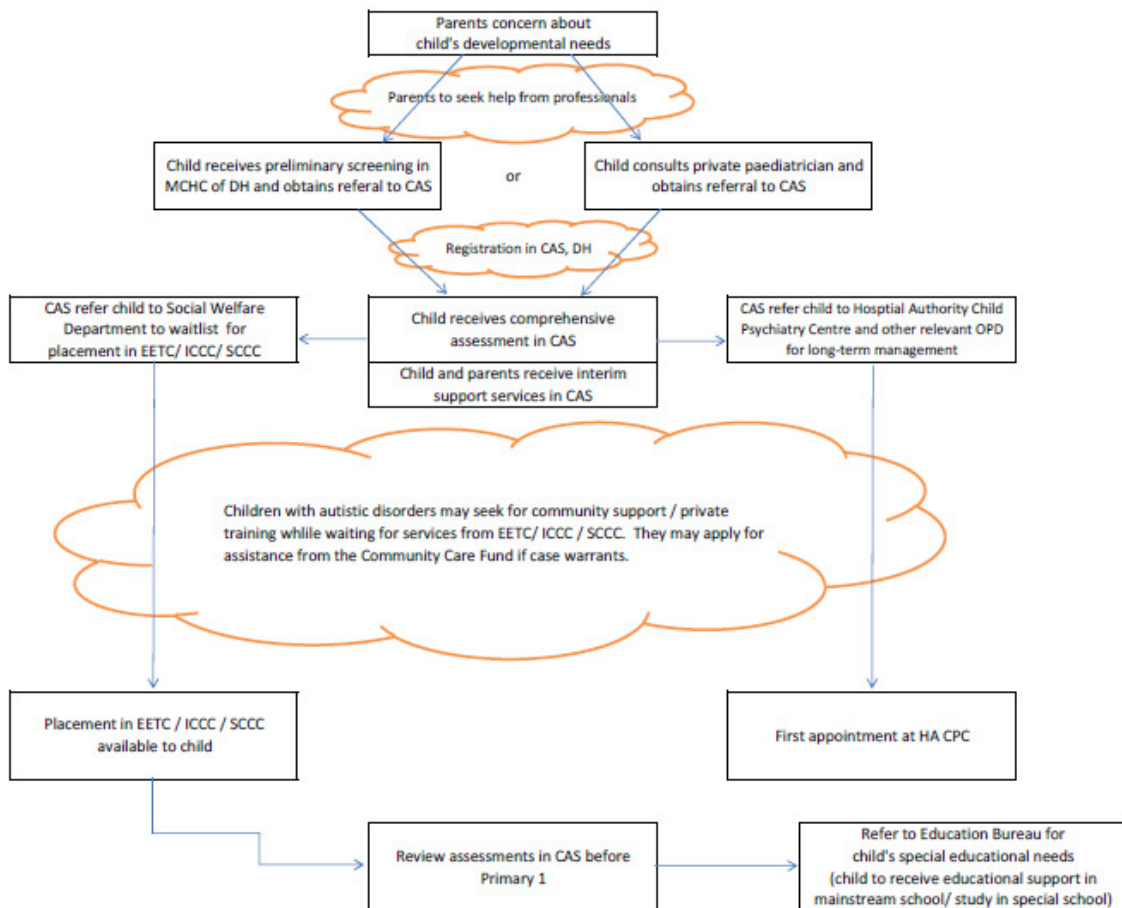
## Co-morbidities 2012

Autism		Atypical Autism	
Borderline developmental delay	38%	Borderline developmental delay	35%
Intellectual disability	44%	Intellectual disability	11%
Motor delay	9%	Motor delay	19%

# Child Assessment Service Referral Flow Chart



## Services provided to ASD children by DH CAS, HA, SWD and NGOs (Estimation according to CAS clinical experience, for reference only)



## Interim Support (individuals and groups)

- Provide individual sessions of **psycho-education** to parents on their specific condition (e.g. on acceptance, psychosocial factors)
- Provide interim support to **parents** on child handling and home training (e.g. for reading and language facilitation, behaviour management in ASD)
- Provide interim training and treatment for **children** who will benefit from early intervention (e.g. ADHD medication)

## Regular interim support activities

- Developmental Training Programs for all new registered cases
- ASD Preschool Workshop
- ASD School age Workshop
- Anxiety Parent Information Day
- Anxiety Group
- ADHD Parent Information Day (Preschool and School age)
- Triple-P (Delay group)
- Triple-P (Hyperactive group)
- Disruptive Behavior Parenting Workshop
- Developmental Cognitive Impairment Parent Workshop
- DCD Parent Workshop, GM and FM group
- Dyslexia Parent Workshop (Preschool and School age)
- Dyslexia Pre-secondary Parent Workshop
- P1-2 Word Learning Group
- Language facilitation group (Preschool and School age)

2010 / 2011 / 2012

- Interim Support Groups
  - 154 / 209 / 190 group sessions
  - 16,500 / 21,608 / 18,421 appointments
- Developmental Training Programmes
  - 201 / 176 / 168 group
  - 5,210 / 4,222 / 4,261 appointments

## **Psycho-education Materials for Parents and Professionals**

- Pamphlets to public and professionals
- Fact sheets (basic and advanced) to parents and professionals on major conditions
- Booklets for parents and patients
- Website materials for public

## Parent Work

- Establish parent self help groups for advocacy and support
  - To enable deeper understanding of individual and group needs from parents of different conditions
  - Provide professional and organizational support for parents to work together and formalize as registered body with stated missions
  - To support ongoing work: attend meetings, support fund raising, provide advice on matters for advocacy

### Founding of parent self help groups

Conditions	English Name	Chinese Name	Established in
Dyslexia / SLD	Hong Kong Association for Specific Learning Disabilities (HKASLD)	香港特殊學習障礙協會	1998
PI	Hong Kong Association for Parents of Persons with Physical Disabilities (HKAPPPD)	香港肢體弱能人士家長協會	2001
HI	Hong Kong Parent's Association of Hearing Impaired Children (HKPAHIC)	香港聽障人士家長協會	2006
ASD	Hong Kong Autism Parents Alliance (HKAPA)	香港自閉症人士家長聯會	2007
ADHD	Hong Kong Association for AD/HD	專注不足/過度活躍症 (香港)協會	2007
ACI	Hong Kong Brain Injury Association for the Young	香港青少年腦創傷協會	2012
SLI	Specific Language Impairment	特殊語言障礙家長協會	Preparatory stage

[www.dhcas.gov.hk](http://www.dhcas.gov.hk)